

## General TECHNICAL DATA

Force	[kN]	2	(maximum)
Stroke	[mm]	50	(maximum)
Handwheel Turns	[ /10mm Stroke]	12	
Enclosure	EN 60529	IP 65	
Ambient Temperature	[°C]	-20 to +80 (S2) / -20 to +60 (S4)	
Weight (excluding Aux.)	[kg]	4,5	

## Actuation speed and TECHNICAL DATA

Actuator Type:		PSL202									
Actuation speed:		<b>0,5 mm/s [50Hz] / 0,6 mm/s [60Hz]</b>									
Power Supply	[V]	230 VAC 1~		115 VAC 1~		24 VAC 1~		400 V 3~		24 VDC	
Frequency	[Hz]	50	60	50	60	50	60			-	
Rated Current ①	[A]	0,08	0,09	0,15	0,18	0,75	0,87			0,3	
max. Power Consumption ②	[VA]	37	40	37	40	37	40			24	
Duty Cycle ③	IEC 60034-1,8	S2 30min		S4 80% ED - 1200c/h							ditto
Motor Protection		blockable								Multifuse	

Actuator Type:		PSL202.1									
Actuation speed:		<b>0,25 mm/s [50Hz] / 0,3 mm/s [60Hz]</b>									
Power Supply	[V]	230 VAC 1~		115 VAC 1~		24 VAC 1~		400 V 3~		24 VDC	
Frequency	[Hz]	50	60	50	60	50	60			-	
Rated Current ①	[A]	0,04	0,045	0,08	0,09	0,38	0,43			0,3	
max. Power Consumption ②	[VA]	28,2	29,4	28,2	29,4	28,2	29,4			24	
Duty Cycle ③	IEC 60034-1,8	S2 30min		S4 80% ED - 1200c/h							ditto
Motor Protection		blockable								Multifuse	

Actuator Type:		PSL202.2									
Actuation speed:		<b>1,4 mm/s [50Hz] / 1,7 mm/s [60Hz]</b>								<b>1,0 mm/s</b>	
Power Supply	[V]	230 VAC 1~		115 VAC 1~		24 VAC 1~		400 V 3~		24 VDC	
Frequency	[Hz]	50	60	50	60	50	60	50	60	-	
Rated Current ①	[A]	0,11	0,09	0,22	0,18	1,05	0,88	0,06	0,05	1,0	
max. Power Consumption ②	[VA]	44	40	44	40	44	40	62	54	41	
Duty Cycle ③	IEC 60034-1,8	S2 30min		S4 50% ED - 1200c/h							ditto
Motor Protection		Thermal Switch								Multifuse	

## ACCESSORIES / Options

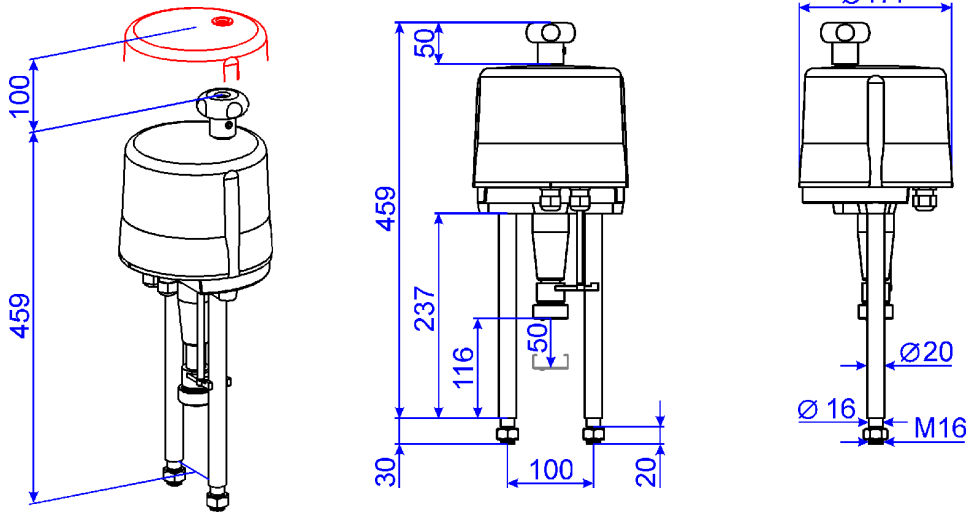
for power supply:		230 VAC 1~	115 VAC 1~	24 VAC 1~	400 V 3~	24 VDC	
Additional switches Standard for 100 mA to 5 A at 24 V to 230 V AC/DC	2WE	✓	✓	✓	✓	✓	
Additional switches Gold for 0,1 mA to 100 mA at 1 V to 24 V AC/DC	2WE Gold	✓	✓	✓	✓	✓	
Single / Double Potentiometer	PD	✓	✓	✓	✓	✓	
Positioner	PSAP	✓	✓	✓	④	—	
Position Transmitter	PSPT	✓	✓	✓	✓	✓	
Heating Resistor	H	✓	✓	✓	✓	✓	
Local Control	PSC	✓	✓	✓	④	—	
Enclosure	EN60529	<b>IP 67</b>					

### Legend:

- ① = Motor current at rated torque, without accessories
- ② = Maximum power consumption including accessories
- ③ = at 25°C ambient temperature
- ④ = requires reversing starter contactor
- ✓ = available
- = not available

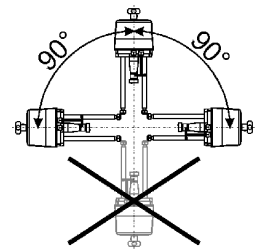


**DIMENSIONS [mm]**



**PSL 202**

Mounting Position



**Dimensions for PS - Standard coupling**

(For threaded valve stem, locked with tension pin)

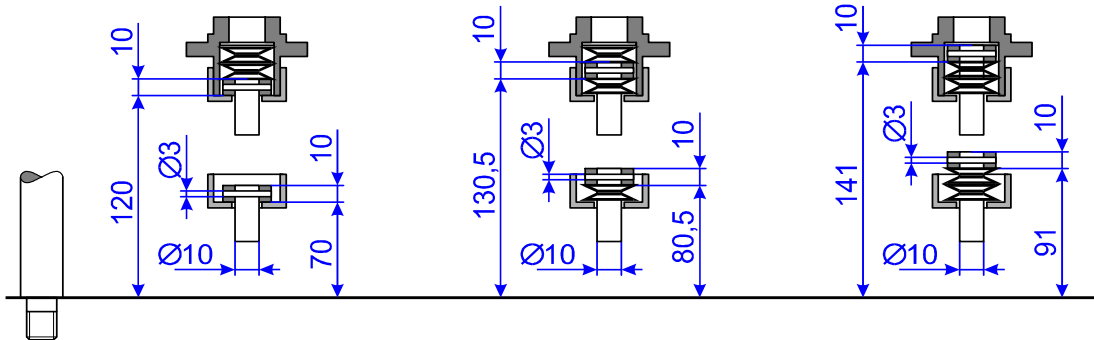
**Through Valve**

Closing Direction: Retracting Valve Stem

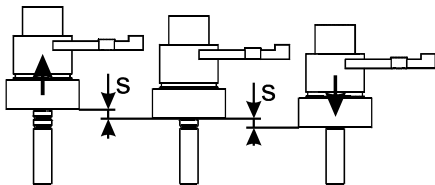
**3-Way Valve**

**Through Valve**

Closing Direction: Extracting Valve Stem

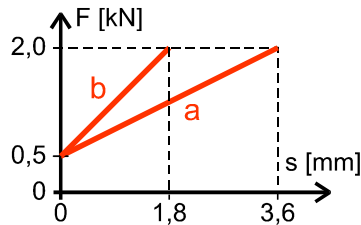


**Adjustment of Closing Force**



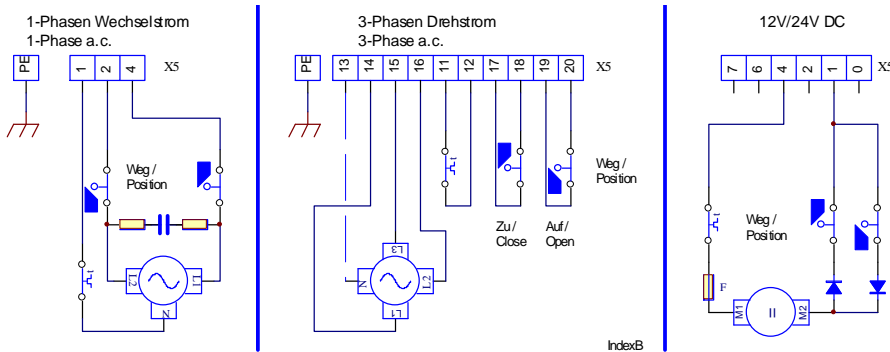
s = Spring Travel

F = Closing Force



a = Spring Travel for Through Valve  
b = Spring Travel for 3-Way Valve

**WIRING DIAGRAM**



**STANDARD EQUIPMENT**

- 2 position switches
- Handwheel with indicator for operating direction
- Mechanical position indicator
- 2 cable glands M20 x 1,5, for cable diameters 8-13 mm
- Central main frame for fitting accessories

